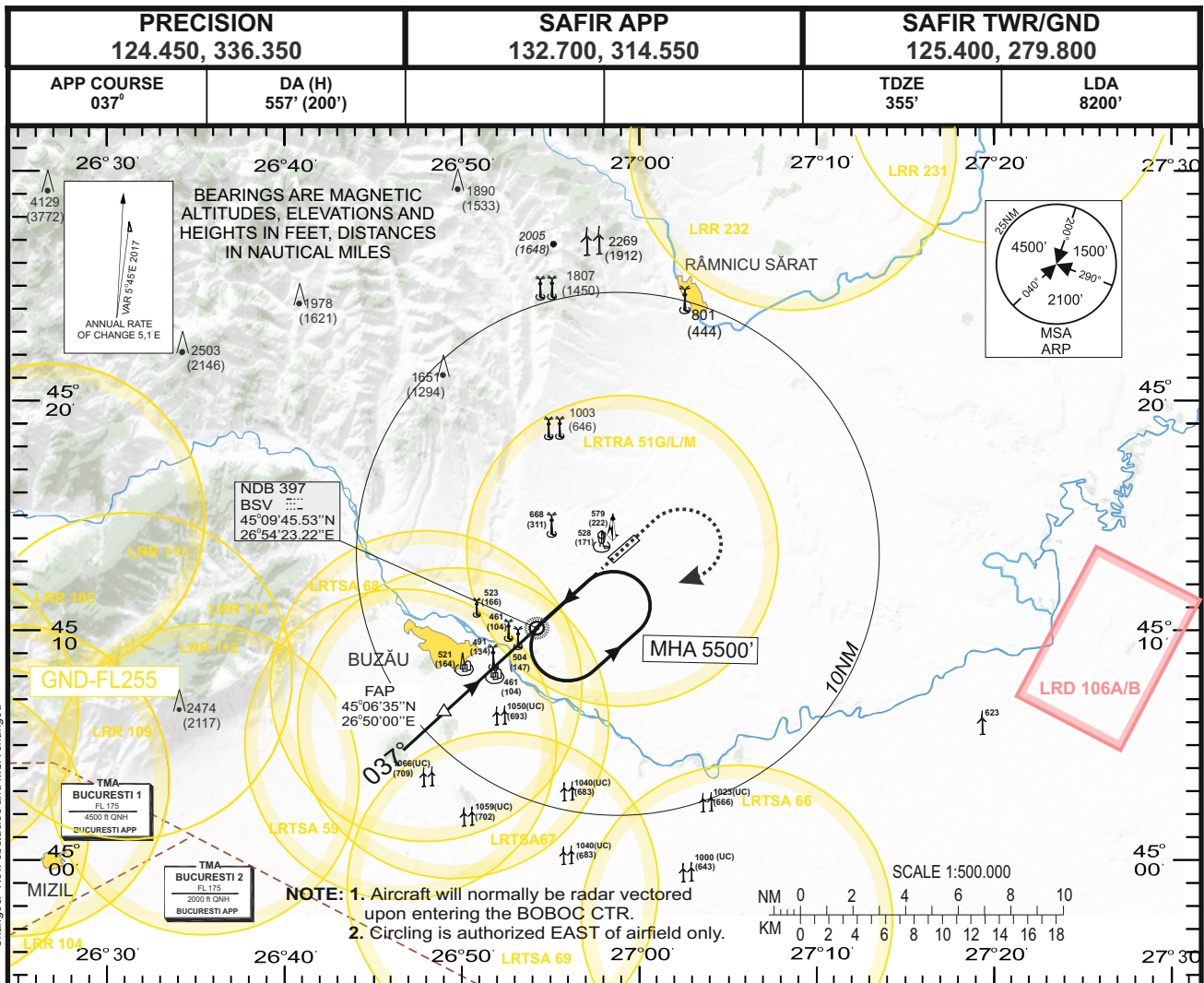


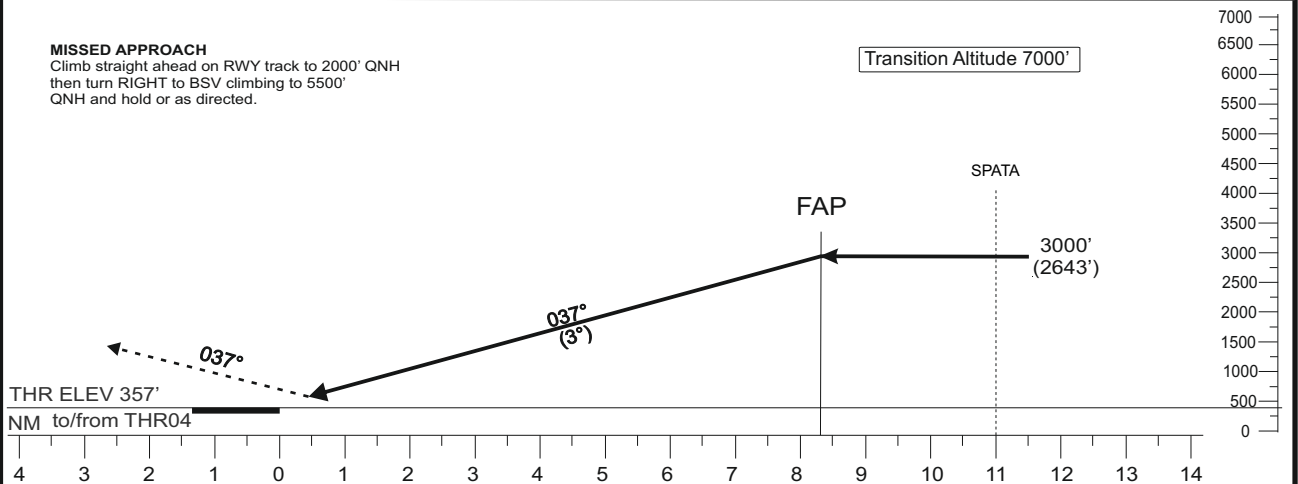
INSTRUMENT APPROACH CHART **AERODROME ELEV 355 ft** **BOBOC (LRBO)**
HEIGHT RELATED TO THR 04 - ELEV 357 ft **SRE-PAR RWY 04**



Changes: New obstacles and MSA changed

MISSED APPROACH
Climb straight ahead on RWY track to 2000' QNH
then turn RIGHT to BSV climbing to 5500'
QNH and hold or as directed.

Transition Altitude 7000'



Ground speed	70	80	90	100	110	120	130	140	150	160	170	180	190	200	210	220
Rate of descent	371	424	477	530	583	636	689	742	795	848	901	954	1007	1060	1113	1166
Time of descent	7:18	6:23	5:40	5:06	4:39	4:15	3:56	3:39	3:24	3:12	3:00	2:50	2:41	2:33	2:26	2:19

CAT	PAR		SRE (GP INOP)	
	DA(H)	VIS	MDA(H)	VIS
A	557'(200')	800	867'(510')	1600
B	557'(200')	800	867'(510')	1600
C	557'(200')	800	867'(510')	2400
D	557'(200')	800	867'(510')	2800
E	557'(200')	800	867'(510')	3200